



# Connecting Cook County ADA TRANSITION PLAN

January 15, 2024

Honorable Toni Preckwinkle,  
President, Cook County  
Board of Commissioners

Zahra Ali, Chief Administrative Officer,  
Bureau of Administration

Jennifer “Sis” Killen, P.E., PTOE  
Superintendent,  
Department of Transportation  
and Highways



**CONNECTING**  
**COOK COUNTY**  
Beyond Transportation

# Connecting Cook County ADA Transition Plan

## January 15, 2024

Honorable Toni Preckwinkle,  
President, Cook County  
Board of Commissioners

Jennifer “Sis” Killen, P.E., PTOE  
Superintendent,  
Department of Transportation  
and Highways

ADA Coordinator  
CCDOH  
69 W. Washington Street, Suite 2300  
Chicago, IL 60602  
Attn: Mr. Andrew Werner, P.E.  
[ADA.Coordinator@cookcountyil.gov](mailto:ADA.Coordinator@cookcountyil.gov)



**CONNECTING**  
**COOK COUNTY**  
Beyond Transportation

Disclaimer: If you require assistance to better understand historic, third-party elements included in this document, please contact the ADA Coordinator at [ADA.Coordinator@cookcountyil.gov](mailto:ADA.Coordinator@cookcountyil.gov).

# Table of Contents

<b>Introduction .....</b>	<b>5</b>
<b>Accessibility Law.....</b>	<b>6</b>
Mandate .....	6
Rehabilitation Act of 1973 .....	6
Americans with Disabilities Act.....	7
Accessibility Guidelines for Pedestrian Facilities in the Public Right-of-Way .....	7
<b>Purpose and Need .....</b>	<b>7</b>
<b>LRTP Transportation Principles .....</b>	<b>8</b>
1. Prioritize Transit and Promote Equal Access to Opportunity .....	8
2. Promote Equal Access to Opportunity .....	8
3. Maintain and Modernize What Already Exists.....	8
<b>ADA Coordinator.....</b>	<b>9</b>
<b>Public Outreach.....</b>	<b>11</b>
<b>Complaint Procedure .....</b>	<b>13</b>
Who May File a Complaint .....	13
How to File a Complaint.....	14
Complaint Processing.....	15
ADA Complaint Record Retention.....	15
<b>Design Standards, Specifications, and Details.....</b>	<b>16</b>
<b>Self-Evaluation .....</b>	<b>17</b>
<b>Inventory .....</b>	<b>19</b>
Compliance Improvement Schedule .....	20
<b>Prioritization .....</b>	<b>21</b>

## Figures

<b>Figure 1. Image from Online Cook County Highway Map .....</b>	<b>17</b>
--	-----------

## Tables

<b>Table 1. County Maintained Highways Database – Updated 6/28/22.....</b>	<b>19</b>
--	-----------

## Appendix

<b>Appendix A: Public Notice .....</b>	<b>22</b>
--	-----------

<b>Appendix B: Public Input Form .....</b>	<b>24</b>
--	-----------

<b>Appendix C: Public Outreach Contact.....</b>	<b>26</b>
---	-----------

<b>Appendix D: Public Outreach Feedback .....</b>	<b>28</b>
---	-----------

<b>Appendix E: ADA Accessibility Complaint Form .....</b>	<b>33</b>
---	-----------

<b>Appendix F: ADA /PROWAG Inspection Sheet .....</b>	<b>35</b>
---	-----------

<b>Appendix G: Condition Map .....</b>	<b>38</b>
--	-----------

<b>Appendix H: Prioritization Maps .....</b>	<b>40</b>
--	-----------

<i>Appendix H-1: Population Density.....</i>	<i>41</i>
--	-----------

<i>Appendix H-2: Senior Population Density.....</i>	<i>42</i>
---	-----------

<i>Appendix H-3: Disabled Population Density .....</i>	<i>43</i>
--	-----------

<i>Appendix H-4: Distance from Schools and Hospitals .....</i>	<i>44</i>
--	-----------

<i>Appendix H-5: Distance from Rail Stations.....</i>	<i>45</i>
---	-----------

<b>Appendix I: Maximum Extent Practicable (MEP) .....</b>	<b>46</b>
---	-----------

<b>Appendix J: Heat Map of Location-Based Priority Form .....</b>	<b>48</b>
---	-----------





## Introduction

Cook County's transportation system is one of its greatest assets, having a central – even dominant – role in the national and international movement of people and goods.<sup>1</sup> Building upon the goals and initiatives set forth in the Connecting Cook County Long Range Transportation Plan (LRTP, 2017), the Cook County Department of Transportation and Highways (DoTH) is committed to strengthening its facilities for all users, with an emphasis on pedestrians<sup>2</sup>. The DoTH's Americans with Disabilities Act (ADA) Transition Plan is intended to identify and outline the goals, objectives, and actions to ensure that all of its facilities, services, programs, and activities in the public right-of-way (ROW) are accessible to all individuals.

This document addresses features under the jurisdiction of the Cook County Department of Transportation and Highways (DoTH) within the public right-of-way (ROW) only. Non-DoTH public facilities under Cook County's jurisdiction are not considered to be included in the scope of work for this document. The DoTH ADA Transition Plan is designed as a living document to be updated frequently to reflect improvements to the Cook County highway infrastructure. If you have any comments, concerns, questions, or would like to file a complaint, please follow the procedures outlined within this document. ADA/PROWAG compliance of sidewalks within highways under County jurisdiction, but maintained by others, shall be included in the self-evaluation of the municipalities where the highway (or highway segment) is located.

---

<sup>1</sup> Cook County, *Connecting Cook County 2040 Long Range Transportation Plan*, p. 5

<sup>2</sup> Cook County, *Connecting Cook County 2040 Long Range Transportation Plan*, p. 51



## Accessibility Law

### Mandate

Regulations implementing Title II of the Americans with Disabilities Act and Section 504 of the Rehabilitation Act of 1973, discussed below, require that each public agency conduct a self-evaluation and develop a Transition Plan that ensures accessible facilities are provided in the public right-of-way. As part of its self-evaluation, DoTH identified barriers to accessibility and considered how the barriers to accessibility will be addressed. The DoTH Transition Plan, in part, sets out the priorities, cost, and schedule for physical improvements for the public right-of-way.

### Rehabilitation Act of 1973

The Rehabilitation Act of 1973 (the “Act”) was the first disability civil rights law to be enacted in the United States. The Act prohibits discrimination on the basis of disability in programs conducted by Federal agencies, in Federal employment, in the employment practices of Federal contractors and, under Section 504 of the Act, in programs receiving Federal financial assistance. Section 504 protects not only qualified individuals with disabilities who apply to and participate in such programs, but also job applicants and employees of the organizations that provide them. This landmark legislation is widely considered to have paved the way for the enactment of the Americans with Disabilities Act.

## Americans with Disabilities Act

On July 26, 1990, President George H.W. Bush signed into law the Americans with Disabilities Act (ADA), a comprehensive civil rights law prohibiting discrimination on the basis of disability. The ADA broadly protects the rights of individuals with disabilities in employment, access to State and local government services, places of public accommodation, transportation, and other important areas of American life. The ADA also requires newly designed and constructed or altered State and local government facilities, public accommodations, and commercial facilities to be readily accessible to and usable by individuals with disabilities. Title II of the ADA protects qualified individuals with disabilities from discrimination on the basis of disability in services, programs, and activities provided by State and local government entities. Title II extends the prohibition on discrimination established by Section 504 of the Rehabilitation Act, as amended, 29 U.S.C. 794, to all activities of State and local governments regardless of whether these entities receive Federal financial assistance. 42 U.S.C. 12131B65.

## Accessibility Guidelines for Pedestrian Facilities in the Public Right-of-Way

The Proposed Accessibility Guidelines for Pedestrian Facilities in the Public Right-of-Way (PROWAG) provides minimum standards for newly designed and constructed public streets and sidewalks, as well as existing public rights-of-way if they are altered. The types of pedestrian facilities covered by PROWAG include, but are not limited to, pedestrian street crossings, curb ramps, detectable warning surfaces and pedestrian access routes. While not yet an enforceable standard under the ADA, PROWAG is regarded as a recommended best practice and its standards inform the DoTH ADA Transition Plan.

The Public Notice describes DoTH's compliance with the ADA. A copy of the Public Notice can be found in [Appendix A](#) of this document, and posted on the DoTH website at:

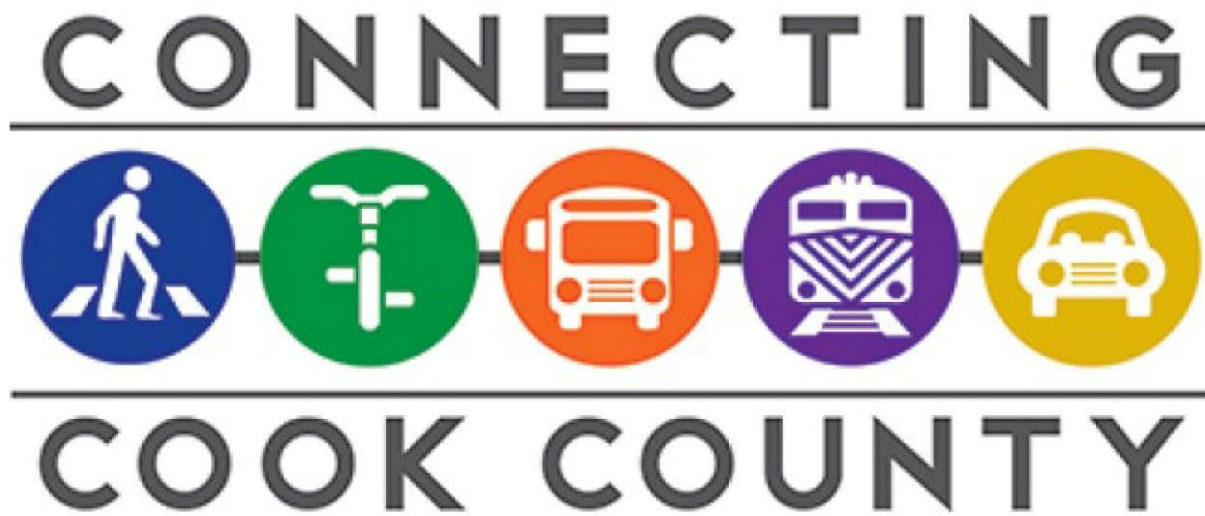
[https://www.cookcountyil.gov/sites/g/files/yllwepo161/files/ada\\_public\\_notice\\_20210323.pdf](https://www.cookcountyil.gov/sites/g/files/yllwepo161/files/ada_public_notice_20210323.pdf)

## Purpose and Need

This ADA Transition Plan document serves to evaluate DoTH policies, programs, and facilities within the public ROW to ensure compliance with the latest accessibility guidelines to fulfill the requirements of Section 504 of the Rehabilitation Act of 1973 and Title II of the Americans with Disabilities Act (ADA) of 1990. This document is also structured to complement and promote the goals of the Cook County Long Range Transportation Plan (LRTP), which prioritizes pedestrians, transit and other transportation alternatives, promotes equal access, and maintains & modernizes existing facilities within the public ROW.







## **L RTP Transportation Principles**

The ADA Transition Plan complements and promotes the following priorities of the Cook County Long Range Transportation Plan (LRTP):

### **1. Prioritize Transit and Promote Equal Access to Opportunity**

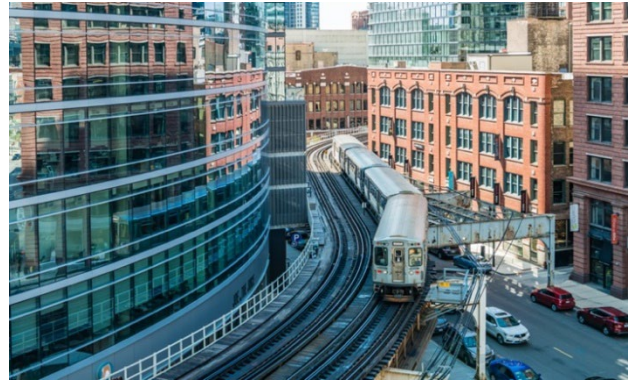
Unequal access to a complete transit system adversely impacts residents. This plan will improve access to transit by providing compliant facilities that can be utilized by citizens with disabilities.

### **2. Promote Equal Access to Opportunity**

Even in areas where most residents are effectively served by the transportation system, there are hundreds of thousands of persons with disabilities, seniors, and parents with small children for whom proximity to transportation options is inadequate. The LRTP calls for redesigning the existing streets and intersections to provide enhanced mobility for bicycling, walking, transit, seniors, families with young children and those with disabilities by adding bike lanes, sidewalks and improved compatibility with bus traffic.

### **3. Maintain and Modernize What Already Exists**

The LRTP describes how current infrastructure can also be modernized. Infrastructure modernization should include updates that meet the requirements in this ADA Transition Plan. One of the priorities outlined in the LRTP is "Moving People", and implementing the ADA Transition Plan helps to accomplish that priority. Improving and maintaining infrastructure such as curb ramps is essential to the connection of people between their homes, multiple modes of transportation, and their destinations. The introduction of ADA-compliant facilities helps modernize the current infrastructure and meet the needs outlined in the County's ADA Transition Plan.



“

Improving and maintaining infrastructure such as curb ramps is essential to the connection of people between their homes, multiple modes of transportation, and their destinations.

”





## ADA Coordinator

DoTH has dedicated an employee to facilitate the ADA compliance program across the DoTH transportation system. This ADA Coordinator serves as a point of contact for internal staff and the general public who may have questions, comments, or concerns regarding ADA accessibility. In addition, the ADA Coordinator responds to complaints/comments, implements and assesses the self-evaluation, and ensures that the established *ADA Transition Plan* is followed and updated, as needed.

Contact information for DoTH's ADA Coordinator is as follows:

**Mail correspondence to:**

ADA Coordinator

Cook County Department of Transportation and Highways

69 W. Washington Street, Suite 2300

Chicago, IL 60602

Attn: Mr. Andrew Werner, P.E.

**Telephone:**

(312) 603-1598

**Email:**

[ADA.Coordinator@cookcountyil.gov](mailto:ADA.Coordinator@cookcountyil.gov)





## Public Outreach

DoTH recognizes that public participation is an important component in the development of an effective ADA Transition Plan. DoTH welcomes public input and encourages comments and suggestions, especially those from individuals with disabilities and/or organizations representing individuals with disabilities. The public may submit comments by completing the Public Input Form ([Appendix B](#)) and mailing it to our office:

**ADA Coordinator**

**Cook County Department of Transportation and Highways**

**69 W. Washington Street, Suite 2300**

**Chicago, IL 60602**

**Attn: Mr. Andrew Werner, P.E.**





Public comments may also be submitted digitally via email to [ADA.Coordinator@cookcountyil.gov](mailto:ADA.Coordinator@cookcountyil.gov). Alternative formats of comment submission may also be requested for any person with a disability or their representative. Comments should contain as much information as possible, including references to specific location(s) and concern(s). For legal reasons, the submitter must also provide their name and contact information in order to facilitate follow-up communication and responses with the DoTH, as needed.

DoTH will maintain a record of persons and organizations consulted during the development of the ADA Transition Plan, see ([Appendix C](#)). Public feedback received will be documented and included as part of updated versions of the ADA Transition Plan ([Appendix D](#)).





## Complaint Procedure

If users of Cook County facilities and services believe that reasonable accommodation in the public right-of-way has not been provided, they have the right to file a complaint. DoTH partners with municipalities to create reasonable connections between intersections. If complaints involve those segments of pedestrian access not under DoTH maintenance/jurisdiction, we attempt to contact the responsible entity and alert them of the complaint. In accordance with [28 C.F.R § 35.107\(b\)](#), DoTH has developed a complaint procedure for the purpose of the prompt and equitable resolution or referral of citizens' complaints, concerns, comments, and other grievances.

### Who May File a Complaint

Any person who believes that they have been excluded from participation in, denied the benefits of, or otherwise subjected to discrimination under any DoTH service, program, activity, or facility may file a complaint. A complaint may also be filed by a representative on behalf of such a person.

“

While not yet an enforceable standard under the ADA, PROWAG is regarded as a recommended best practice and its standards inform the DoTH ADA Transition Plan

”

## How to File a Complaint

A complainant shall submit a complaint within sixty days of the incident or identification of the complaint. The complaint may be filed in any of the following methods:



### MAIL:

Complaints may be submitted via mail by filling out the *ADA Accessibility Complaint Form* found in [Appendix E](#). Forms should be mailed to the following address:

**Cook County Department of Transportation and Highways**  
**Attn: ADA Coordinator**  
**69 W. Washington Street, Suite 2300**  
**Chicago, IL 60602**



### EMAIL:

Completed ADA Accessibility Complaint Forms may also be submitted via email to:  
[ADA.Coordinator@cookcountyil.gov](mailto:ADA.Coordinator@cookcountyil.gov)



### ONLINE:

An online, fillable pdf form is available at:

[https://www.cookcountyil.gov/sites/g/files/yllwepo161/files/documents/2024-01/ADA%20Accessibility%20Complaint%20Form\\_20231211%20-%20Fillable%20%28508%20Compliant%29.pdf](https://www.cookcountyil.gov/sites/g/files/yllwepo161/files/documents/2024-01/ADA%20Accessibility%20Complaint%20Form_20231211%20-%20Fillable%20%28508%20Compliant%29.pdf)



### TELEPHONE:

Information can also be submitted by telephone by calling (312) 603-1598. The ADA Coordinator will incorporate the information into a formal complaint on the caller's behalf.



### REPRESENTATIVE:

Any person with a disability or their representative may request to file a complaint using an alternative format.



## Complaint Processing

DoTH will acknowledge complaints received and will process them once the identity of the complainant is established. If the complaint filed does not concern a DoTH facility, the ADA Coordinator will notify the complainant and attempt to forward it to the appropriate government or private entity.

Within sixty calendar days of receipt by the ADA Coordinator, DoTH will investigate to determine the validity of the alleged violation. If appropriate, DoTH will arrange to meet with the complainant to discuss the matter and attempt to reach a resolution of the complaint.

The resolution of any specific complaint will require consideration of varying circumstances, such as:

- ▶ The nature of the access to services, programs, or facilities at issue and the essential eligibility requirements for participation
- ▶ The health and safety of the general public
- ▶ The degree to which an accommodation would constitute a fundamental alteration to the program, service, or facility, or cause undue hardship to DoTH

Accordingly, the resolution by DoTH of any one complaint does not constitute a precedent upon which DoTH is bound or upon which other complaining parties may rely.

## ADA Complaint Record Retention

The ADA Coordinator shall keep a record of all complaints filed for non-compliance with the Americans with Disabilities Act (1990) and Section 504 of the Rehabilitation Act of 1973 for a minimum of three years following the date of case closure provided all audits have been completed, and no litigation is pending or anticipated.







## Design Standards, Specifications, and Details

Repairs and improvements performed by DoTH within DoTH right-of-way will be designed in accordance to the PROWAG and any ADA design standards in effect at that time. Currently, DoTH employs the design standards developed and adopted by the Illinois Department of Transportation (IDOT). These standards shall be applied for meeting ADA compliance for projects within the public right-of-way under DoTH jurisdiction, with the following modifications:

- ▶ ADA ramp cross-slopes are to be designed at a maximum slope of 1.5%, so as not to exceed 2% during construction.
- ▶ As of April 13, 2021, CCDOTH uses detectable warnings composed of cast iron or steel.
- ▶ APS pushbuttons shall be installed when an intersection is rebuilt or when pedestrian signals are added to an intersection.

The standard drawings and specifications that DoTH references for curb ramp design can be found on IDOT's website. These IDOT standards closely reflect the *Proposed Right-of-Way Accessibility Guidelines (PROWAG)*, developed by the United States Access Board as best practice for design.

Where local standards, policy or code require that design criteria exceed PROWAG or IDOT standards, then the local design criteria should be applied.



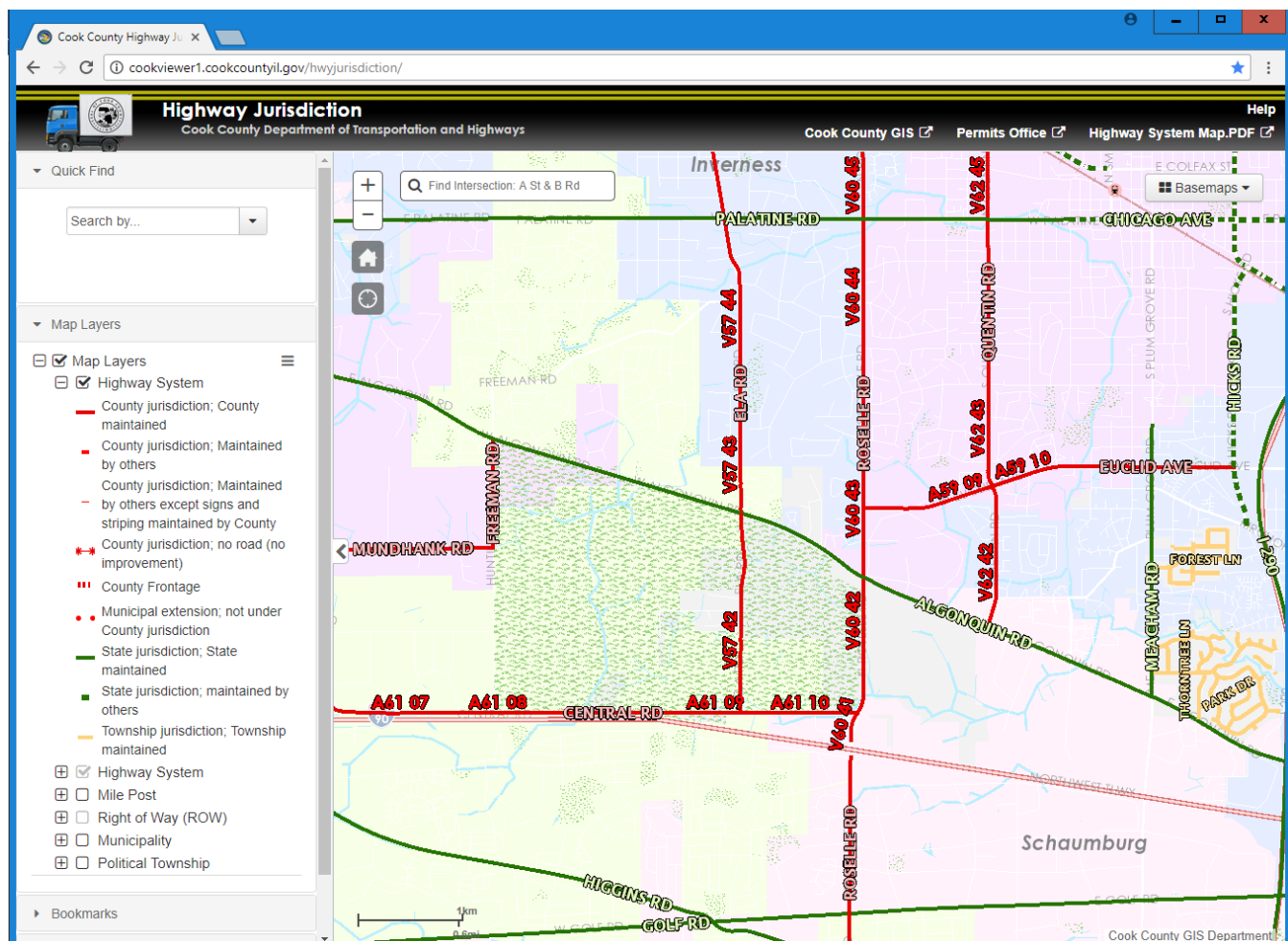
## Self-Evaluation

DoTH's inventory of existing ADA facilities within the public right-of-way at intersections maintained by the County was performed in June 2017. Staff recorded locations, conditions, and barriers limiting accessibility via ground survey for:

- ▶ curb ramps
- ▶ crosswalks
- ▶ pedestrian signals
- ▶ pedestrian signal activation buttons

Using the ADA/PROWAG Inspection Sheet found in [Appendix F](#), each item was evaluated and measured across various parameters and recorded digitally into the DoTH master database. A county-wide overview of these facilities can be found on the map in [Appendix G](#).

Figure 1. Image from Online Cook County Highway Map



Each piece of ADA infrastructure will be classified as either “compliant” or “non-compliant” based on IDOT and PROWAG standards. The non-compliant items will be added to a schedule of improvement and prioritized according to DoTH procedure identified within Compliance Improvement Schedule section and the prioritization maps shown in [Appendix H](#), where the darkest shaded areas represent areas with the highest priority. Periodic reviews will be conducted to ensure that the inventory database is as up-to-date as possible. New deficiencies will be scheduled and prioritized accordingly for improvement.

As non-compliant items are improved, they will be re-assessed and updated within the DoTH’s database. Resident Engineers will be required to complete new ADA/PROWAG Inspection Sheets for all newly constructed ADA improvements for collection and inclusion within the DoTH database.

It should be noted that under DoTH policy, sidewalks located within Cook County highway right-of-way are typically the responsibility of the municipality within which the sidewalk is located. As such, ADA/PROWAG compliance of sidewalks within highways under County jurisdiction, but maintained by others, shall be included in the self-evaluation of the municipalities where the highway (or highway segment) is located. One segment of sidewalk does fall under DoTH maintenance jurisdiction: a small segment located along Lake Cook Road near Waukegan Road within Northfield Township, will be inventoried and improved to meet IDOT / PROWAG ADA compliance standards under the maintenance jurisdiction of DoTH.

Similarly, transit stops, and shelters located within Cook County highway right-of-way are the responsibility of the transit authority and/or municipality within which the facility is located. As such, ADA/PROWAG compliance of transit stops and shelters located on highways under County jurisdiction, but owned and maintained by others, shall be included in the self-evaluation of the transit authority and/or municipality where the highway (or highway segment) is located.

Public Cook County building facilities will not be included in this inventory.

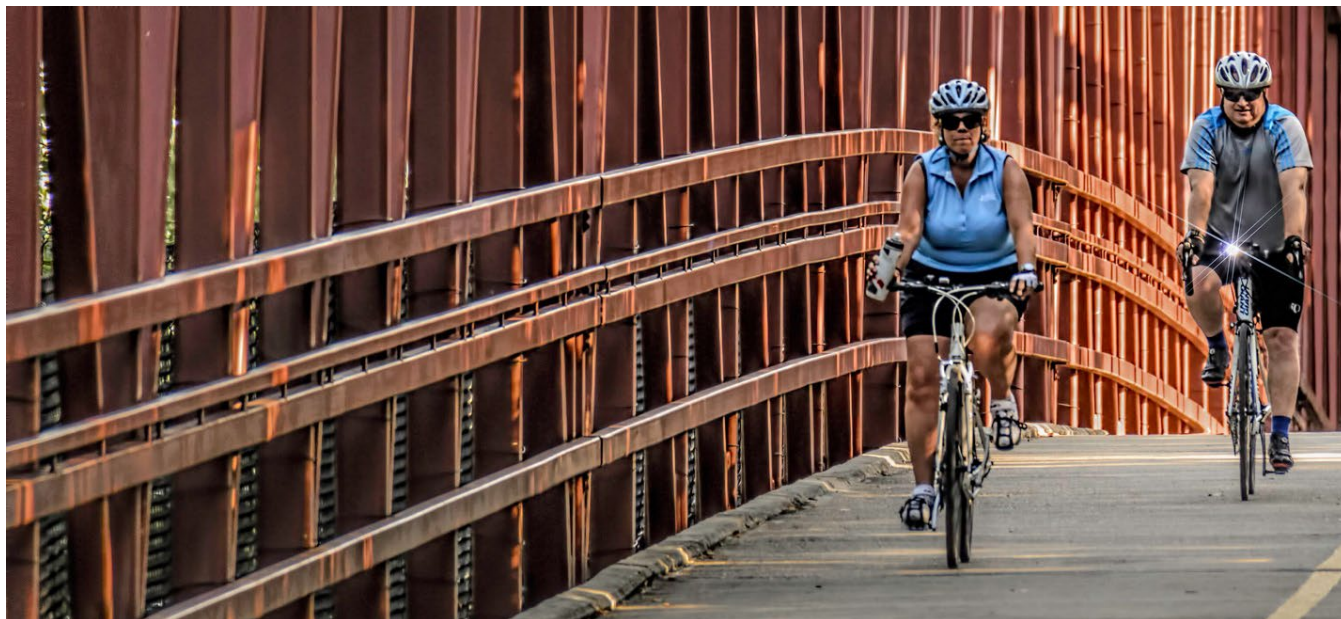
For a map of the Cook County highway system coded by jurisdiction and maintenance responsibility, please access the County’s website at:

<https://maps.cookcountyil.gov/hwyjurisdiction/>

“

Resident Engineers will be required to complete new ADA/PROWAG Inspection Sheets for all newly constructed ADA improvements for collection and inclusion within the DoTH database

”



## Inventory

A self-evaluation of County-maintained highways was performed on June 14, 2017. Highways located within the City of Chicago have not been included within the DoTH database, as those facilities are included in that city's maintenance inventory. Frontage roads under the jurisdiction and maintenance of DoTH are also not included in the 2017 inventory and will be assessed during the next field survey period.

The database will be updated by the ADA Coordinator as facilities are brought up to compliance. The current compliance status of facilities within DoTH maintenance jurisdiction are shown in the table below:

**Table 1. County Maintained Highways Database – Updated 1/8/24**

	Curb Ramps	Crosswalks	Pedestrian Push Buttons
<b>Compliant</b>	881	4,175	4
<b>Non-Compliant</b>	8,540	596	2,116
<b>Missing <sup>(1)</sup></b>	121	N/A	N/A
<b>MEP <sup>(2)</sup></b>	0	0	0
<b>TOTAL</b>	9,542	4,771	2,120

(1) Indicates that a curb ramp is not located where one is warranted. Does not apply to crosswalks or pedestrian push buttons. This data has not yet been collected and may not be complete.

(2) Maximum Extent Practicable (MEP). Indicates that this feature is not fully compliant, but due to circumstances beyond the feasible limits of design, full compliance cannot be accomplished.

A color-coded map showing curb ramp locations based on current condition is in [Appendix G](#).



## Compliance Improvement Schedule

DoTH is committed to providing accessible curb ramps, crosswalks, and traffic signal facilities throughout its roadway system. Recognizing and rectifying the existing barriers identified during the self-evaluation process will require scheduling and prioritization within the County's multi-year program. Funds will be dedicated every year towards ADA improvement projects until full compliance is achieved. The Department is considering a goal of 25 years to make all facilities fully compliant to the maximum extent feasible. Non-compliant facilities will be addressed at a rate of approximately 1/25th of the current inventory per year over the next 25 years.

The funding and scheduling of these improvements will continue concurrent with CCDOTH's yearly construction program. Assets may be improved through various activities, including routine maintenance, Capital maintenance & rehabilitation projects, and spot improvements addressing specific issues related to complaints and/or emergencies. Funding of these projects will be via the Cook County Annual Capital Improvement Program (MFT funds), Federal grants, State aid, and intergovernmental agreements.

Additionally, the ADA Coordinator will review all permits and improvement plans created by other agencies that impact DoTH facilities covered under this document for compliancy prior to construction. Upon completion of the improvement, status of compliance will be recorded by the ADA Coordinator and the inventory will be updated accordingly.

If fulfilling ADA compliance at a specific location per PROWAG standards is determined to be technically infeasible, the County will document and support the efforts and design used to improve conditions to the maximum extent practicable (MEP). If required, the MEP conditions will be documented by the ADA Coordinator. Approved MEP documentation will be stored with the ADA Coordinator. An example of an IDOT MEP Form is included in [Appendix I](#).





## Prioritization

Improvements to meet system-wide ADA compliance within the public right-of-way will be prioritized according to the following factors:

- ▶ Coordination with projects within the DoTH construction program
- ▶ Public Input/Complaints
- ▶ Total Population Density
- ▶ Senior Population Density
- ▶ Disabled Population Density
- ▶ Distance from Schools & Hospitals
- ▶ Distance from Public Rail Stations

County maps illustrating each of DoTH's prioritization factors are located in [Appendix H](#) (Appendices H-1 through H-5). A supplemental heat map showing location-based priority can be found in [Appendix J](#).

# ADA Transition Plan

## Appendix A: Public Notice

Honorable Toni Preckwinkle,  
President, Cook County  
Board of Commissioners

Jennifer “Sis” Killen, P.E., PTOE  
Superintendent,  
Department of Transportation  
and Highways

ADA Coordinator  
CCDOH  
69 W. Washington Street, Suite 2300  
Chicago, IL 60602  
Attn: Mr. Andrew Werner, P.E.  
[ADA.Coordinator@cookcountyil.gov](mailto:ADA.Coordinator@cookcountyil.gov)



**CONNECTING**  
**COOK COUNTY**  
Beyond Transportation

## Notice Under the Americans with Disabilities Act

In accordance with the requirements of title II of the Americans with Disabilities Act (ADA) of 1990, the Cook County Department of Transportation and Highways (DoTH) will not discriminate against qualified individuals with disabilities on the basis of disability in its services, programs, or activities.

**Employment:** The Cook County Department of Transportation and Highways does not discriminate on the basis of disability in its hiring or employment practices and complies with all regulations promulgated by the U.S. Equal Employment Opportunity Commission under Title I of the ADA.

**Effective Communication:** The Cook County Department of Transportation and Highways will generally, upon request, provide appropriate aids and services leading to effective communication for qualified persons with disabilities so they can participate equally in DoTH programs, services, and activities, including qualified sign language interpreters, documents in Braille, and other ways of making information and communications accessible to people who have speech, hearing, or vision impairments.

**Modifications to Policies and Procedures:** The Cook County Department of Transportation and Highways will make all reasonable modifications to policies and programs to ensure that people with disabilities have an equal opportunity to enjoy all of its programs, services, and activities. For example, individuals with service animals are welcome in DoTH offices, even where pets are generally prohibited.

Anyone who requires an auxiliary aid or service for effective communication, or a modification of policies or procedures to participate in a program, service, or activity of DoTH, should contact the office of the ADA Coordinator as soon as possible but no later than 48 hours before the scheduled event.

The ADA does not require DoTH to take any action that would fundamentally alter the nature of its programs or services or impose an undue financial or administrative burden.

The Cook County Department of Transportation and Highways will not place a surcharge on a particular individual with a disability or any group of individuals with disabilities to cover the cost of providing auxiliary aids/services or reasonable modifications of policy, such as retrieving items from locations that are open to the public but are not accessible to persons who use wheelchairs.

Complaints that a program, service, or activity of DoTH is not accessible to persons with disabilities should be directed to the ADA Coordinator. Their contact information is presented below:

ADA Coordinator  
Cook County Department of Transportation and Highways  
69 W Washington Street Chicago, IL 60602

Telephone: (312) 603-1598

Email:

[ADA.Coordinator@cookcountyil.gov](mailto:ADA.Coordinator@cookcountyil.gov)



# ADA Transition Plan

## Appendix B: Public Input Form

Honorable Toni Preckwinkle,  
President, Cook County  
Board of Commissioners

Jennifer “Sis” Killen, P.E., PTOE  
Superintendent,  
Department of Transportation  
and Highways

ADA Coordinator  
CCDOTH  
69 W. Washington Street, Suite 2300  
Chicago, IL 60602  
Attn: Mr. Andrew Werner, P.E.  
[ADA.Coordinator@cookcountyil.gov](mailto:ADA.Coordinator@cookcountyil.gov)



**CONNECTING**  
**COOK COUNTY**  
Beyond Transportation

A fillable pdf version of this form may be requested from [ADA.Coordinator@cookcountyiil.gov](mailto:ADA.Coordinator@cookcountyiil.gov)

### Public Input Form

**Complete & return form to the Cook County Dept. of Trans. & Highways ADA Coordinator:**

69 W. Washington St., Suite 2300, Chicago, IL 60602  
Or scan and email to: [ADA.Coordinator@cookcountyiil.gov](mailto:ADA.Coordinator@cookcountyiil.gov)  
Information can also be taken via telephone upon request.

Provide comments and inputs pertaining to the Cook County DoTH ADA Transition Plan. Note that comments will appear on future revisions of the ADA Transition Plan. Note that not all public locations are Cook County facilities. If applicable, we will do our best to direct your complaint to the appropriate entity. Use the back of this sheet and/or additional sheets as necessary.

1. Rate how well the ADA Transition Plan fulfills the Purpose and Need of the Americans with Disabilities Act and the Cook County Long Range Transportation Plan.				
1	2	3	4	5
2. Rate the contact information regarding the ADA Coordinator and how this role supports the ADA Transition Plan.				
1	2	3	4	5
3. Rate the "Public Outreach" section of the ADA Transition Plan.				
1	2	3	4	5
4. Rate the "Complaint Procedure" section of the ADA Transition Plan.				
1	2	3	4	5
5. Rate the "Design Standards, Specifications and Details" section of the ADA Transition Plan.				
1	2	3	4	5
6. Rate the "Self Evaluation" and "Inventory" sections of the ADA Transition Plan.				
1	2	3	4	5
7. Rate the "Prioritization" section of the ADA Transition Plan.				
1	2	3	4	5
8. Provide any comments pertaining to the ADA Transition Plan as presented on the public outreach website.				

**Contact information (Optional):**

We may contact you to clarify your comments or provide additional assistance. Cook County will not publish nor share your contact information.

First Name:		Last Name:	
Facility/Organization:			
Address:			
City:			
State:		Zip:	
Phone Number:			
Email:			

10/24/2023

# ADA Transition Plan

## Appendix C:

### Public Outreach Contact

Honorable Toni Preckwinkle,  
President, Cook County  
Board of Commissioners

Jennifer “Sis” Killen, P.E., PTOE  
Superintendent,  
Department of Transportation  
and Highways

ADA Coordinator  
CCDOTH  
69 W. Washington Street, Suite 2300  
Chicago, IL 60602  
Attn: Mr. Andrew Werner, P.E.  
[ADA.Coordinator@cookcountyil.gov](mailto:ADA.Coordinator@cookcountyil.gov)



**CONNECTING**  
**COOK COUNTY**  
Beyond Transportation

Dates identifying the most recent contact and feedback on the *ADA Transition Plan* between DoTH and pertinent organizations are listed below. The following list is not intended to be comprehensive of service organizations serving Cook County.

<b>Cook County Email Listserv</b>	<b>Number of Contacts</b>	<b>Contacted</b>	<b>Feedback</b>
DoTH Township Directory	22	12/8/21	N/A
Invest in Cook	51	12/8/21	N/A
Fair Transit Community Partners	1457	12/8/21	N/A

<b>Agency Or Facility Name</b>	<b>Service Focus</b>	<b>Contacted</b>	<b>Feedback</b>
Access Living of Metropolitan Chicago	Disability Independence	12/8/21	N/A
Alexander Graham Bell Elementary School	Deaf & Hard of Hearing School	12/8/21	N/A
Autism Speaks Upper Midwest	Autism Advocacy	12/8/21	N/A
Avenues to Independence	Disability Independence	12/8/21	N/A
Center on Deafness	Deaf & Hard of Hearing	12/9/21	N/A
The Chicago Autism Project	Autism Advocacy	12/8/21	N/A
Chicago Hearing Society	Deaf & Hard of Hearing	12/8/21	N/A
The Chicago Lighthouse	Blind, Visually Impaired, Disabled	12/8/21	2/25/22
Chicago Metropolitan Agency for Planning	Government Planning	12/1/21	Declined to comment
Children of Peace Catholic School - Deaf/Hard of Hearing Program	Deaf & Hard of Hearing School	12/8/21	N/A
City of Chicago, Mayor's Office for People with Disabilities	Municipality	11/29/21	N/A
Clearbrook	Disability Independence	12/8/21	N/A
Community Alternatives Unlimited	Disability Assistance	12/8/21	N/A
Community Service Options	Disability Independence	12/8/21	N/A
Envision Unlimited	Disability Assistance	12/8/21	N/A
Equip for Equality	Disability Advocacy	11/29/21	N/A
Friedman Place	Blind & Visually Impaired Community	12/8/21	N/A
Great Lakes ADA Center	ADA Advocacy	12/8/21	N/A
Hadley Institute for the Blind & Visually Impaired	Blind & Visually Impaired School	12/8/21	N/A
Illinois Association of the Deaf	Deaf & Hard of Hearing	12/8/21	N/A
Little City	Disability Assistance	12/8/21	N/A
Misericordia	Disability Community	12/8/21	N/A
Park Lawn	Disability Community	12/8/21	N/A
Progress Center for Independent Living	Disability Independence	12/8/21	N/A
Southwest Cook County Cooperative Association for Special Education	Disability School	12/8/21	N/A
Statewide Independent Living Council of Illinois	Government Planning	12/8/21	N/A
Swoboda Deaf Center	Deaf & Hard of Hearing	12/8/21	N/A
UCP Seguin of Greater Chicago	Cerebral Palsy Assistance	12/8/21	N/A



# ADA Transition Plan

## Appendix D: Public Outreach Feedback

Honorable Toni Preckwinkle,  
President, Cook County  
Board of Commissioners

Jennifer “Sis” Killen, P.E., PTOE  
Superintendent,  
Department of Transportation  
and Highways

ADA Coordinator  
CCDOTH  
69 W. Washington Street, Suite 2300  
Chicago, IL 60602  
Attn: Mr. Andrew Werner, P.E.  
[ADA.Coordinator@cookcountyil.gov](mailto:ADA.Coordinator@cookcountyil.gov)



**CONNECTING  
COOK COUNTY**  
Beyond Transportation

## Public Input Form

Complete & return form to the Cook County Dept. of Trans. & Highways ADA Coordinator:

69 W. Washington St., Suite 2300, Chicago, IL 60602

Or scan and email to: [ADA.Coordinator@cookcountyil.gov](mailto:ADA.Coordinator@cookcountyil.gov)

Information can also be taken via telephone upon request.

Note that not all public locations are Cook County facilities. If applicable, we will do our best to direct your complaint to the appropriate entity. Use the back of this sheet and/or additional sheets as necessary.

Describe any problems/challenges that you or your family experience as a pedestrian along Cook County pedestrian facilities. If none, please indicate.

Within the City of Chicago Heights both Vollmer Rd, Holbrook and DeGor Rd. Completely lack any pedestrian or bicycle facilities. Both Roads are extremely dangerous to walk or ride a

Describe any specific locations with known barriers to accessibility. Be as detailed as possible and provide specific information regarding location (city, street, side of road, bridge, intersection, orientation, etc.). Barriers include: items blocking pathway, narrow curb ramp, broken/uneven ramp, lack of pedestrian access, faulty signal equipment, etc. If none, please indicate.

There is a mile Strip (Chicago Road 311th PKA Hap Bruno Baseball Park) that lacks a Sidewalk /side Path/bicycle lane which is a major barrier leading to the Thorn Creek Trail System from the Northside of the city. Another Barrier to the Thorn Creek Trail System is at Parkside (and Halsey St.)

Additional Comments:

Chicago Heights is in desperate need of pedestrian and bicycle improvements throughout the city in order to align with the countries transportation goals that help promote inclusion & equality. Please Help!

Date:

12/16/2021

### Contact information (Optional):

We may contact you to clarify your comments or provide additional assistance. Your information will not be published nor will it be used outside this office.

First Name:	George	Last Name:	Brassea
Facility/Organization:	Chicago Heights Bicycle and Resource Center		
Address:	222 Vollmer Rd. Suite AA		
City:	Chicago Heights		
State:	IL	Zip:	60411
Phone Number:	(708) 248-7039		
Email:			

## Public Input Form

Complete & return form to the Cook County Dept. of Trans. & Highways ADA Coordinator:

69 W. Washington St., Suite 2300, Chicago, IL 60602

Or scan and email to: [ADA.Coordinator@cookcountyil.gov](mailto:ADA.Coordinator@cookcountyil.gov)

Information can also be taken via telephone upon request.

Note that not all public locations are Cook County facilities. If applicable, we will do our best to direct your complaint to the appropriate entity. Use the back of this sheet and/or additional sheets as necessary.

<b>Describe any problems/challenges that you or your family experience as a pedestrian along Cook County pedestrian facilities. If none, please indicate.</b> Within the City of Chicago Heights Vollmer & Halbrook & Joe Orr Rd. Completely lack pedestrian or bicycle facilities. Both roads are extremely dangerous to walk or ride a bicycle on regardless of age or ability.
<b>Describe any specific locations with known barriers to accessibility. Be as detailed as possible and provide specific information regarding location (city, street, side of road, bridge, intersection, orientation, etc.). Barriers include: items blocking pathway, narrow curb ramp, broken/uneven ramp, lack of pedestrian access, faulty signal equipment, etc. If none, please indicate.</b> There's a mile strip (Chicago Rd. & 11th AKA Harp Bruno Baseball Park) that lacks a sidewalk / Sidepath / Bicycle lane which is a major barrier leading to the Thorn Creek Trail System from the North of the City. Another barrier to the Thorn Creek Trail System is at Parkside & Halsted St.
<b>Additional Comments:</b> Chicago Heights is in desperate need of pedestrian and bicycle improvements throughout the City in order to align with the Country's transportation goals that help promote inclusion & equity. <u>Please Help!</u>

<b>Date:</b>	
--------------	--

### Contact information (Optional):

We may contact you to clarify your comments or provide additional assistance. Your information will not be published nor will it be used outside this office.

<b>First Name:</b>		<b>Last Name:</b>	
<b>Facility/Organization:</b>			
<b>Address:</b>			
<b>City:</b>			
<b>State:</b>		<b>Zip:</b>	
<b>Phone Number:</b>			
<b>Email:</b>			



## Public Input Form

Complete & return form to the Cook County Dept. of Trans. & Highways ADA Coordinator:

69 W. Washington St., Suite 2300, Chicago, IL 60602

Or scan and email to: [ADA.Coordinator@cookcountvil.gov](mailto:ADA.Coordinator@cookcountvil.gov)

Information can also be taken via telephone upon request.

Note that not all public locations are Cook County facilities. If applicable, we will do our best to direct your complaint to the appropriate entity. Use the back of this sheet and/or additional sheets as necessary.

<p>Describe any problems/challenges that you or your family experience as a pedestrian along Cook County pedestrian facilities. In none, please indicate.</p> <p>In Midlothian, there are lack of sidewalks along Pulaski Rd.</p>
<p>Describe any specific locations with known barriers to accessibility. Be as detailed as possible and provide specific information regarding location (city, street, side of road, bridge, intersection, orientation, etc.). Barriers include: items blocking pathway, narrow curb ramp, broken/uneven ramp, lack of pedestrian access, faulty signal equipment, etc. If none, please indicate.</p> <p>Sidewalks needed on Pulaski Rd at 143rd - 145th streets, and along the Forest Preserve from 152nd - 159th streets.</p>
<p>Additional Comments:</p>

Date:	2/25/2022
-------	-----------

### Contact information (Optional):

We may contact you to clarify your comments or provide additional assistance. Your information will not be published nor will it be used outside this office.

First Name:	Kathleen	Last Name:	Caveney
Facility/Organization:	Trustee, Village of Midlothian		
Address:	14801 S. Pulaski Rd		
City:	Midlothian		
State:	IL	Zip:	60445
Phone Number:	708-691-4836		
Email:	kcaveney@villageofmidlothian.org		



**From:** [Greg Polman](#)  
**To:** [ADA Coordinator](#)  
**Subject:** Comments  
**Date:** Friday, February 25, 2022 1:20:00 PM  
**Attachments:** [image002.png](#)  
[image004.png](#)  
[image005.png](#)  
[image006.png](#)

---

### External Message Disclaimer

This message originated from an external source. Please use proper judgment and caution when opening attachments, clicking links, or responding to this email.

Andrew, I am sending my comments in this format, because the form is not a form that can be filled out with a screen reader.

The ADA transition plans seems to be comprehensive and meets the requirements of the law.

I cannot give any specific locations to single out. However, I can make several comments based on reports from some of our constituents.

It is important to many that APS be installed at all intersections for the safety of people who are Blind or visually Impaired.

The technology is available and would make travel safer and more independent.

The environment has change with electric cars, making travel more difficult, not being able to use cars as a cue to cross a street

It is also important to the Blind community, as well as others that there be a safe pathway of travel.

It would be important for the county to work with municipalities to ensure that pathways are developed for the safety of all and ease of travel from place to place.

Possibly this could be part of the plan..

It is also important to have a vehicle for continuous feedback from the disability community to make sure their needs are being met.

**Greg Polman**

**Senior Vice President/Public Policy | Independent Living**

Phone: 312.997.3673

[www.chicagolighthouse.org](http://www.chicagolighthouse.org)



**The Chicago  
Lighthouse**

Serving the Blind, Visually Impaired,  
Disabled and Veteran Communities

# ADA Transition Plan

## Appendix E: ADA Accessibility Complaint Form

Honorable Toni Preckwinkle,  
President, Cook County  
Board of Commissioners

Jennifer "Sis" Killen, P.E., PTOE  
Superintendent,  
Department of Transportation  
and Highways

ADA Coordinator  
CCDOTH  
69 W. Washington Street, Suite 2300  
Chicago, IL 60602  
Attn: Mr. Andrew Werner, P.E.  
[ADA.Coordinator@cookcountyil.gov](mailto:ADA.Coordinator@cookcountyil.gov)



**CONNECTING**  
**COOK COUNTY**  
Beyond Transportation

# ADA Accessibility Complaint Form

Complete & return form to the Cook County Dept. of Trans. & Highways ADA Coordinator:

69 W. Washington St., Suite 2300, Chicago, IL 60602

Or scan and email to: [ADA.Coordinator@cookcountyil.gov](mailto:ADA.Coordinator@cookcountyil.gov)

Information can also be taken via telephone or personal interview upon request.

Note that this form pertains to Cook County public right-of-way only, including roadways and bridges. Complaints pertaining to discrimination due to other means will be forwarded to the pertinent Departments. Not all public locations are Cook County facilities. If applicable, complaints will be directed to the appropriate jurisdictional entity. Use the back of this sheet or additional pages as needed.

<b>Describe the date/time &amp; location of the incident, issue, or condition. Be as detailed as possible and provide specific information regarding location (city, street, side of road, bridge, intersection, facility, orientation, etc.).</b>
<b>Describe in detail the nature of the complaint (include all parties involved). Attach additional pages, photos, documents if necessary.</b>
<b>If this has been filed with another private, federal, state, local agency, or legal entity. Provide details:</b>

## Contact information:

We may contact you to clarify your comments or provide additional assistance.

<b>First Name:</b>		<b>Last Name:</b>	
<b>Facility/Organization:</b>			
<b>Address:</b>			
<b>City:</b>			
<b>State:</b>		<b>Zip:</b>	
<b>Phone Number:</b>			
<b>Email:</b>			

<b>Signature</b>		<b>Date</b>	
<b>DoTH USE ONLY</b>	<b>Date Received</b>		

# ADA Transition Plan

## Appendix F: ADA /PROWAG Inspection Sheet

Honorable Toni Preckwinkle,  
President, Cook County  
Board of Commissioners

Jennifer "Sis" Killen, P.E., PTOE  
Superintendent,  
Department of Transportation  
and Highways

ADA Coordinator  
CCDOTH  
69 W. Washington Street, Suite 2300  
Chicago, IL 60602  
Attn: Mr. Andrew Werner, P.E.  
[ADA.Coordinator@cookcountyil.gov](mailto:ADA.Coordinator@cookcountyil.gov)



**CONNECTING**  
**COOK COUNTY**  
Beyond Transportation



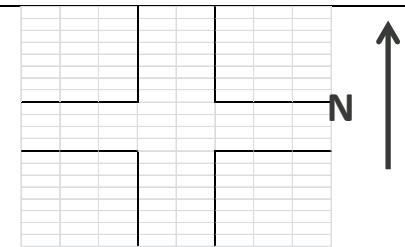


# Illinois Department of Transportation

## ADA / PROWAG Inspection Sheet

Route: \_\_\_\_\_  
 Cross Streets: \_\_\_\_\_  
 City/Township: \_\_\_\_\_  
 County: \_\_\_\_\_  
 ID: \_\_\_\_\_

Date: \_\_\_\_\_  
 Inspector: \_\_\_\_\_  
 Checked  
 by: \_\_\_\_\_  
 Job No.: \_\_\_\_\_



	Curb Ramp (CR) Questions (check box for yes)	RAMP	RAMP	RAMP	RAMP	RAMP	RAMP	RAMP	RAMP
1	Is there a sidewalk leading up to the corner?	<input type="checkbox"/>	<input type="checkbox"/>	<input type="checkbox"/>	<input type="checkbox"/>	<input type="checkbox"/>	<input type="checkbox"/>	<input type="checkbox"/>	<input type="checkbox"/>
2	Does the CR have detectable warnings? If yes, answer 3, 4, & 5	<input type="checkbox"/>	<input type="checkbox"/>	<input type="checkbox"/>	<input type="checkbox"/>	<input type="checkbox"/>	<input type="checkbox"/>	<input type="checkbox"/>	<input type="checkbox"/>
3	Are the detectable warnings properly placed?	<input type="checkbox"/>	<input type="checkbox"/>	<input type="checkbox"/>	<input type="checkbox"/>	<input type="checkbox"/>	<input type="checkbox"/>	<input type="checkbox"/>	<input type="checkbox"/>
4	Are the detectable warnings in good condition?	<input type="checkbox"/>	<input type="checkbox"/>	<input type="checkbox"/>	<input type="checkbox"/>	<input type="checkbox"/>	<input type="checkbox"/>	<input type="checkbox"/>	<input type="checkbox"/>
5	Do the detectable warnings provide good color contrast?	<input type="checkbox"/>	<input type="checkbox"/>	<input type="checkbox"/>	<input type="checkbox"/>	<input type="checkbox"/>	<input type="checkbox"/>	<input type="checkbox"/>	<input type="checkbox"/>
6	If there is concrete or another walking surface adjacent to the sides of the CR, does the ramp have side flares? If yes, answer 7.	<input type="checkbox"/>	<input type="checkbox"/>	<input type="checkbox"/>	<input type="checkbox"/>	<input type="checkbox"/>	<input type="checkbox"/>	<input type="checkbox"/>	<input type="checkbox"/>
7	Indicate the maximum slope of the side flares (%)								
8	If there is a built-up CR, is it outside of the vehicle path?	<input type="checkbox"/>	<input type="checkbox"/>	<input type="checkbox"/>	<input type="checkbox"/>	<input type="checkbox"/>	<input type="checkbox"/>	<input type="checkbox"/>	<input type="checkbox"/>
9	If there is a marked crosswalk, is the CR contained within it?	<input type="checkbox"/>	<input type="checkbox"/>	<input type="checkbox"/>	<input type="checkbox"/>	<input type="checkbox"/>	<input type="checkbox"/>	<input type="checkbox"/>	<input type="checkbox"/>
10	Are all slope transitions (including gutter) flush and level (1/4" max or those between 1/4" & 1/2" beveled at a 1:2 slope)?	<input type="checkbox"/>	<input type="checkbox"/>	<input type="checkbox"/>	<input type="checkbox"/>	<input type="checkbox"/>	<input type="checkbox"/>	<input type="checkbox"/>	<input type="checkbox"/>
11	Is there a min. clear space of 4' x 4' at the bottom of the ramp within width of ped street crossing & outside parallel vehicle travel lane?	<input type="checkbox"/>	<input type="checkbox"/>	<input type="checkbox"/>	<input type="checkbox"/>	<input type="checkbox"/>	<input type="checkbox"/>	<input type="checkbox"/>	<input type="checkbox"/>
12	Is a minimum turning space provided at the top of the ramp meeting these requirements? 4' x 4' if unconstrained - 4' x 5' in direction of ramp if constrained. If a space is provided, continue to 13	<input type="checkbox"/>	<input type="checkbox"/>	<input type="checkbox"/>	<input type="checkbox"/>	<input type="checkbox"/>	<input type="checkbox"/>	<input type="checkbox"/>	<input type="checkbox"/>
13	Is the maximum cross slope of the turning space $\leq 2.00\%$ ?	<input type="checkbox"/>	<input type="checkbox"/>	<input type="checkbox"/>	<input type="checkbox"/>	<input type="checkbox"/>	<input type="checkbox"/>	<input type="checkbox"/>	<input type="checkbox"/>
14	Is the minimum width of the CR $\geq 48"$ ? If no, answer 15	<input type="checkbox"/>	<input type="checkbox"/>	<input type="checkbox"/>	<input type="checkbox"/>	<input type="checkbox"/>	<input type="checkbox"/>	<input type="checkbox"/>	<input type="checkbox"/>
15	Record minimum width of CR (inches)								
16	Is the maximum cross slope of CR $\leq 2.00\%$ ? If no, answer 17	<input type="checkbox"/>	<input type="checkbox"/>	<input type="checkbox"/>	<input type="checkbox"/>	<input type="checkbox"/>	<input type="checkbox"/>	<input type="checkbox"/>	<input type="checkbox"/>
17	Record maximum cross slope of CR (%)								
18	Is the maximum CR running slope $\leq 8.3\%$ ? If no, answer 19	<input type="checkbox"/>	<input type="checkbox"/>	<input type="checkbox"/>	<input type="checkbox"/>	<input type="checkbox"/>	<input type="checkbox"/>	<input type="checkbox"/>	<input type="checkbox"/>
19	Record maximum CR running slope (%)								

	<b>Curb Ramp (CR) Questions (check box for yes)</b>	<b>RAMP</b>	<b>RAMP</b>	<b>RAMP</b>	<b>RAMP</b>	<b>RAMP</b>	<b>RAMP</b>	<b>RAMP</b>	<b>RAMP</b>
20	Is the maximum CR gutter slope $\leq 5.00\%$ ?	<input type="checkbox"/>	<input type="checkbox"/>	<input type="checkbox"/>	<input type="checkbox"/>	<input type="checkbox"/>	<input type="checkbox"/>	<input type="checkbox"/>	<input type="checkbox"/>
21	Is the minimum width of adjacent walk $\geq 48"$ ?	<input type="checkbox"/>	<input type="checkbox"/>	<input type="checkbox"/>	<input type="checkbox"/>	<input type="checkbox"/>	<input type="checkbox"/>	<input type="checkbox"/>	<input type="checkbox"/>
	<b>Curb Ramp (CR) Questions (check box for yes)</b>	<b>RAMP</b>	<b>RAMP</b>	<b>RAMP</b>	<b>RAMP</b>	<b>RAMP</b>	<b>RAMP</b>	<b>RAMP</b>	<b>RAMP</b>
22	Is the maximum cross slope of adjacent walk $\leq 2.00\%$ ?	<input type="checkbox"/>	<input type="checkbox"/>	<input type="checkbox"/>	<input type="checkbox"/>	<input type="checkbox"/>	<input type="checkbox"/>	<input type="checkbox"/>	<input type="checkbox"/>
23	Is the maximum running slope of adjacent walk $\leq 5.00\%$ or $\leq$ adjacent roadway grade?	<input type="checkbox"/>	<input type="checkbox"/>	<input type="checkbox"/>	<input type="checkbox"/>	<input type="checkbox"/>	<input type="checkbox"/>	<input type="checkbox"/>	<input type="checkbox"/>
24	Is the surface or any horizontal opening of the CR compliant?	<input type="checkbox"/>	<input type="checkbox"/>	<input type="checkbox"/>	<input type="checkbox"/>	<input type="checkbox"/>	<input type="checkbox"/>	<input type="checkbox"/>	<input type="checkbox"/>
<b>Following questions to be filled out by office personnel:</b>									
25	<b>Record Illinois State Curb Ramp Condition Rating (1 – 4)</b>								
26	<b>Record Illinois State Curb Ramp User Rating (1 – 4)</b>								
	<b>Sidewalk Questions (check box for yes)</b>	<b>SIDE</b>							
27	Is there sidewalk along this segment? If yes, answer 28–31	<input type="checkbox"/>	<input type="checkbox"/>	<input type="checkbox"/>	<input type="checkbox"/>				
28	Does sidewalk meet maximum cross slope requirements?	<input type="checkbox"/>	<input type="checkbox"/>	<input type="checkbox"/>	<input type="checkbox"/>				
29	Does sidewalk meet maximum running grade requirements?	<input type="checkbox"/>	<input type="checkbox"/>	<input type="checkbox"/>	<input type="checkbox"/>				
30	Does sidewalk meet minimum width requirements?	<input type="checkbox"/>	<input type="checkbox"/>	<input type="checkbox"/>	<input type="checkbox"/>				
31	Does the surface condition meet requirements?	<input type="checkbox"/>	<input type="checkbox"/>	<input type="checkbox"/>	<input type="checkbox"/>				
	<b>Crosswalk Questions(check box for yes)</b>	<b>NORTH LEG</b>	<b>EAST LEG</b>	<b>SOUTH LEG</b>	<b>WEST LEG</b>	<b>OTHER</b>	<b>OTHER</b>	<b>OTHER</b>	<b>OTHER</b>
32	Is the crosswalk marked? If yes, continue to 33	<input type="checkbox"/>	<input type="checkbox"/>	<input type="checkbox"/>	<input type="checkbox"/>	<input type="checkbox"/>	<input type="checkbox"/>	<input type="checkbox"/>	<input type="checkbox"/>
33	Record minimum width of crosswalk (inches)								
34	If no yield or stop control, is the cross slope $\leq 5.00\%$ <b>or</b> if yield or stop control, is cross slope $\leq 2.00\%$ ? If no for either, continue to 35	<input type="checkbox"/>	<input type="checkbox"/>	<input type="checkbox"/>	<input type="checkbox"/>	<input type="checkbox"/>	<input type="checkbox"/>	<input type="checkbox"/>	<input type="checkbox"/>
35	Record maximum cross slope of crosswalk (%)								
36	Is the running slope (grade) of the crosswalk $\leq 5.00\%$ ? If no, continue to 37	<input type="checkbox"/>	<input type="checkbox"/>	<input type="checkbox"/>	<input type="checkbox"/>	<input type="checkbox"/>	<input type="checkbox"/>	<input type="checkbox"/>	<input type="checkbox"/>
37	Record maximum running slope (grade) of crosswalk (%)								
38	Is the surface smooth, firm, stable, slip-resistant?	<input type="checkbox"/>	<input type="checkbox"/>	<input type="checkbox"/>	<input type="checkbox"/>	<input type="checkbox"/>	<input type="checkbox"/>	<input type="checkbox"/>	<input type="checkbox"/>
	<b>Traffic Equipment Questions (check box for yes)</b>	<b>RAMP</b>	<b>RAMP</b>	<b>RAMP</b>	<b>RAMP</b>	<b>RAMP</b>	<b>RAMP</b>	<b>RAMP</b>	<b>RAMP</b>
39	Are there traffic signals?	<input type="checkbox"/>	<input type="checkbox"/>	<input type="checkbox"/>	<input type="checkbox"/>	<input type="checkbox"/>	<input type="checkbox"/>	<input type="checkbox"/>	<input type="checkbox"/>
40	Are there pedestrian signals? If yes, continue to 41–44	<input type="checkbox"/>	<input type="checkbox"/>	<input type="checkbox"/>	<input type="checkbox"/>	<input type="checkbox"/>	<input type="checkbox"/>	<input type="checkbox"/>	<input type="checkbox"/>
41	Is there a ped push button within MUTCD recommended area?	<input type="checkbox"/>	<input type="checkbox"/>	<input type="checkbox"/>	<input type="checkbox"/>	<input type="checkbox"/>	<input type="checkbox"/>	<input type="checkbox"/>	<input type="checkbox"/>
42	Is APS installed?	<input type="checkbox"/>	<input type="checkbox"/>	<input type="checkbox"/>	<input type="checkbox"/>	<input type="checkbox"/>	<input type="checkbox"/>	<input type="checkbox"/>	<input type="checkbox"/>
43	Do the operable parts allow for 2" dia. use w/closed fist?	<input type="checkbox"/>	<input type="checkbox"/>	<input type="checkbox"/>	<input type="checkbox"/>	<input type="checkbox"/>	<input type="checkbox"/>	<input type="checkbox"/>	<input type="checkbox"/>
44	Does the ped push button allow for the necessary reach?	<input type="checkbox"/>	<input type="checkbox"/>	<input type="checkbox"/>	<input type="checkbox"/>	<input type="checkbox"/>	<input type="checkbox"/>	<input type="checkbox"/>	<input type="checkbox"/>

# ADA Transition Plan

## Appendix G: Condition Map

Honorable Toni Preckwinkle,  
President, Cook County  
Board of Commissioners

Jennifer “Sis” Killen, P.E., PTOE  
Superintendent,  
Department of Transportation  
and Highways

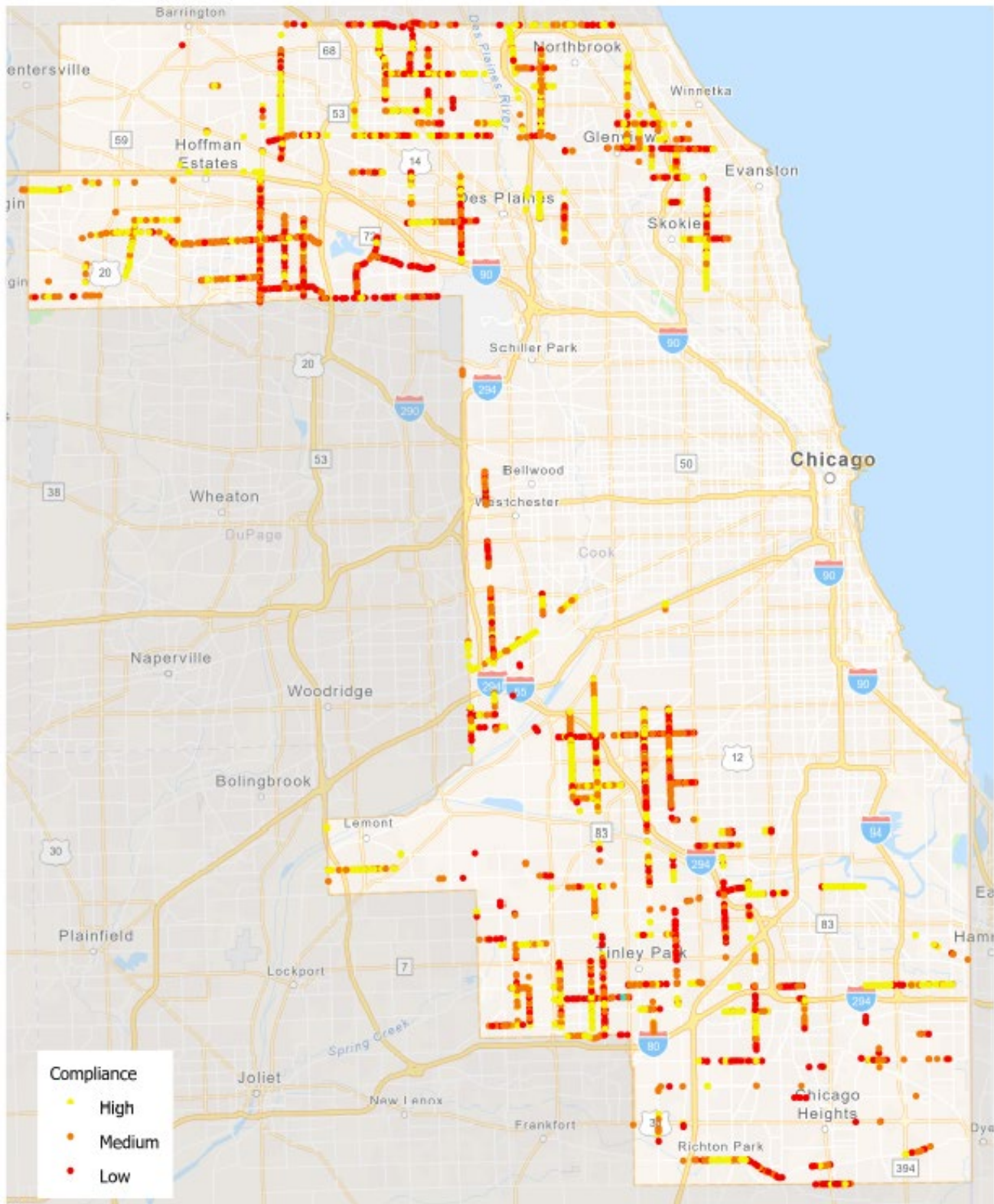
ADA Coordinator  
CCDOTH  
69 W. Washington Street, Suite 2300  
Chicago, IL 60602  
Attn: Mr. Andrew Werner, P.E.  
[ADA.Coordinator@cookcountyil.gov](mailto:ADA.Coordinator@cookcountyil.gov)



**CONNECTING**  
**COOK COUNTY**  
Beyond Transportation

## Map of Curb Ramp Locations Color Coded by Condition Severity

### ADA Inventory / Current Conditions Curb Ramp Condition Survey



Appendix G: Condition Map



# ADA Transition Plan

## Appendix H: Prioritization Maps

Honorable Toni Preckwinkle,  
President, Cook County  
Board of Commissioners

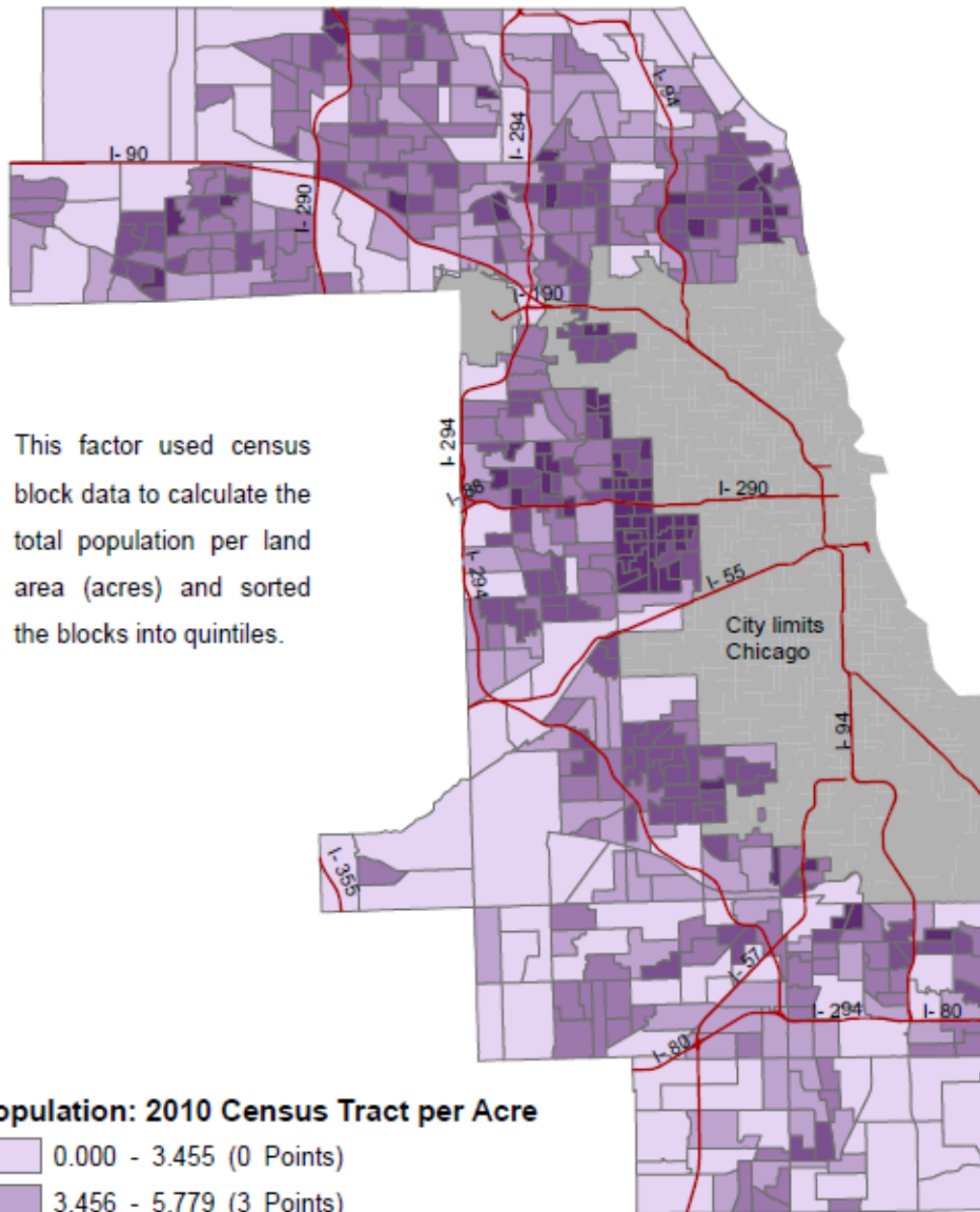
Jennifer “Sis” Killen, P.E., PTOE  
Superintendent,  
Department of Transportation  
and Highways

ADA Coordinator  
CCDOTH  
69 W. Washington Street, Suite 2300  
Chicago, IL 60602  
Attn: Mr. Andrew Werner, P.E.  
[ADA.Coordinator@cookcountyil.gov](mailto:ADA.Coordinator@cookcountyil.gov)



**CONNECTING**  
**COOK COUNTY**  
Beyond Transportation

## Cook County, Illinois Population Density excluding City of Chicago

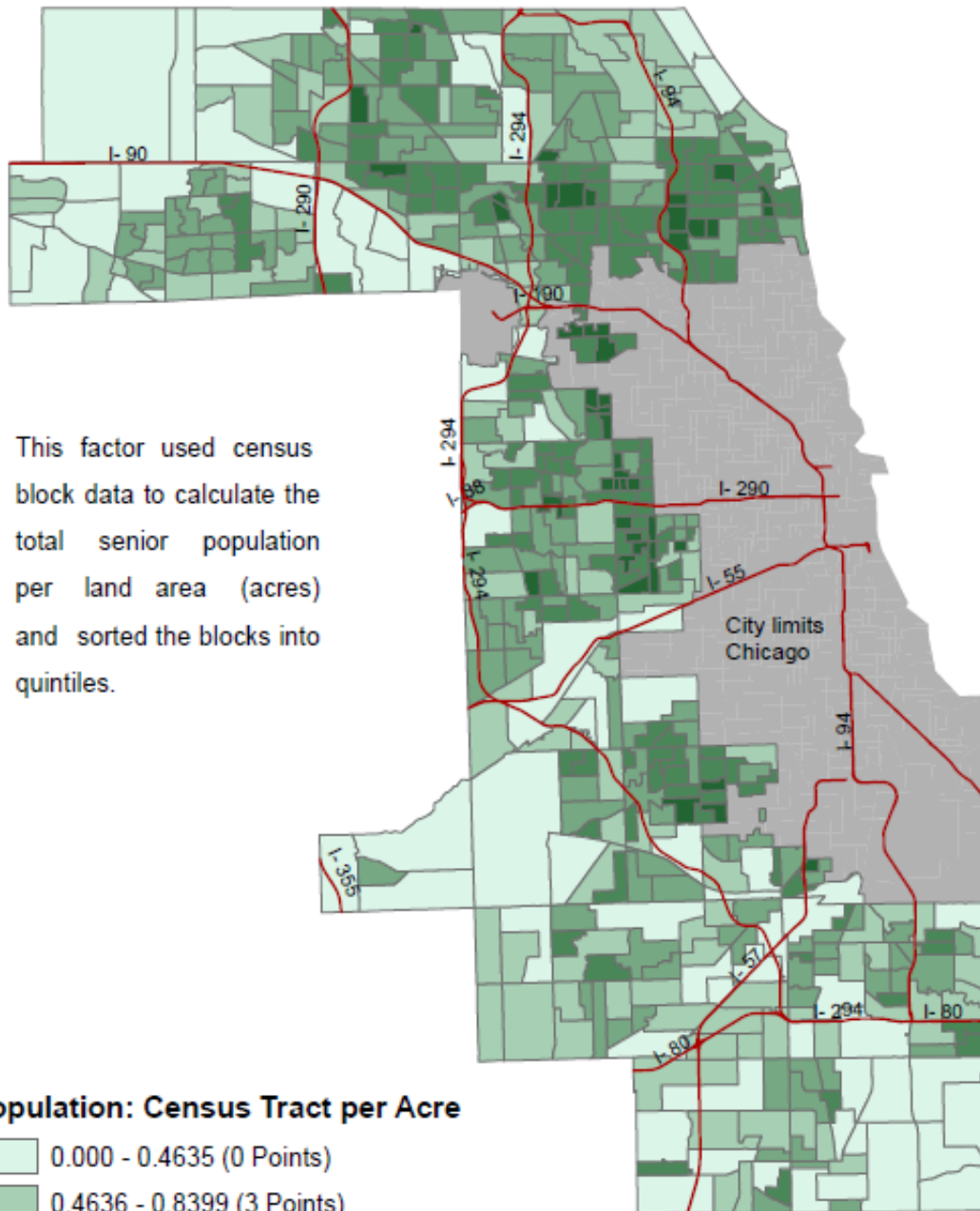


Estimates based on 2015 American Community Survey data

0 3.75 7.5 15 Miles



## Cook County, Illinois Senior Population Density excluding City of Chicago

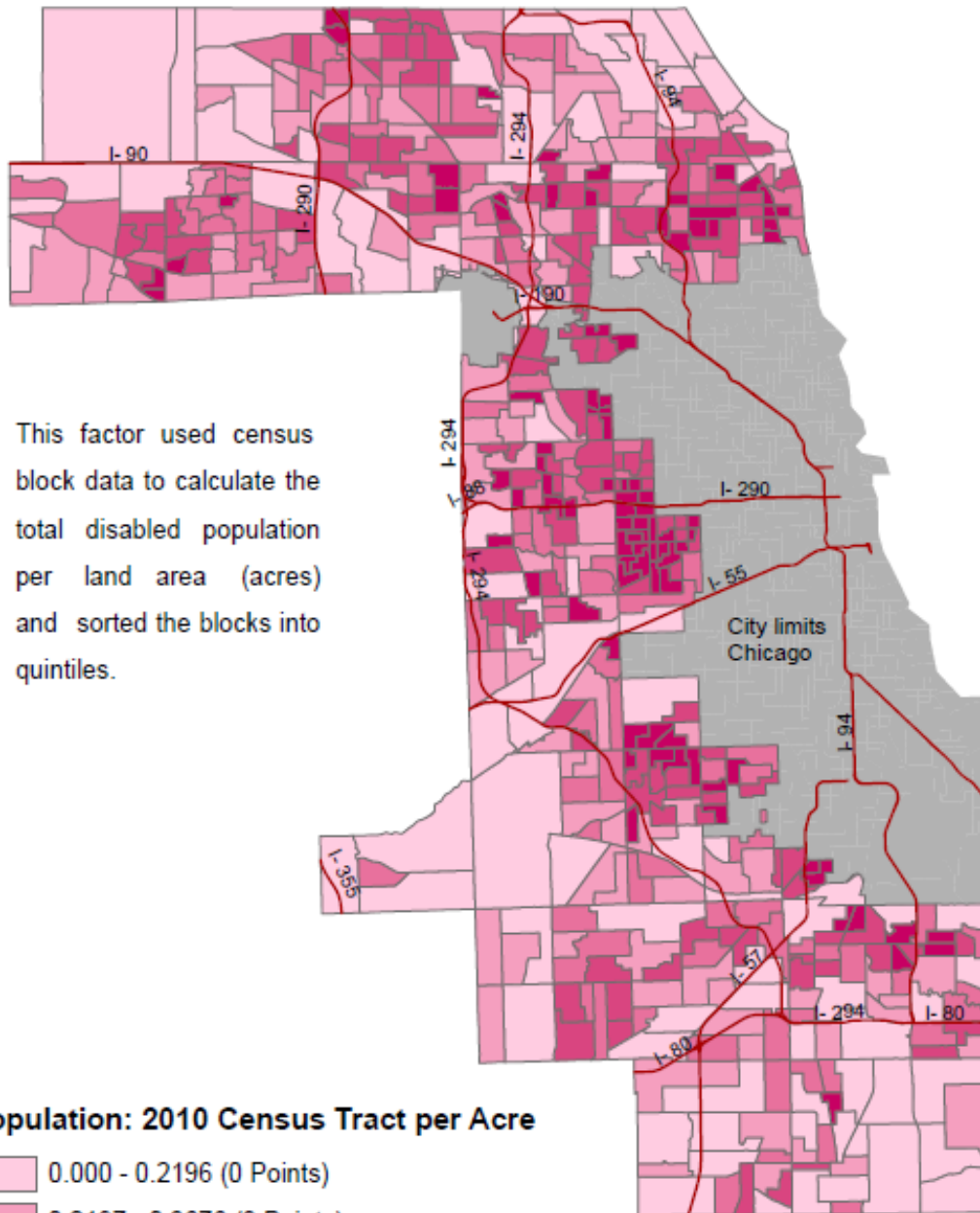


Estimates based on 2015 American Community Survey data

0 3.75 7.5 15 Miles



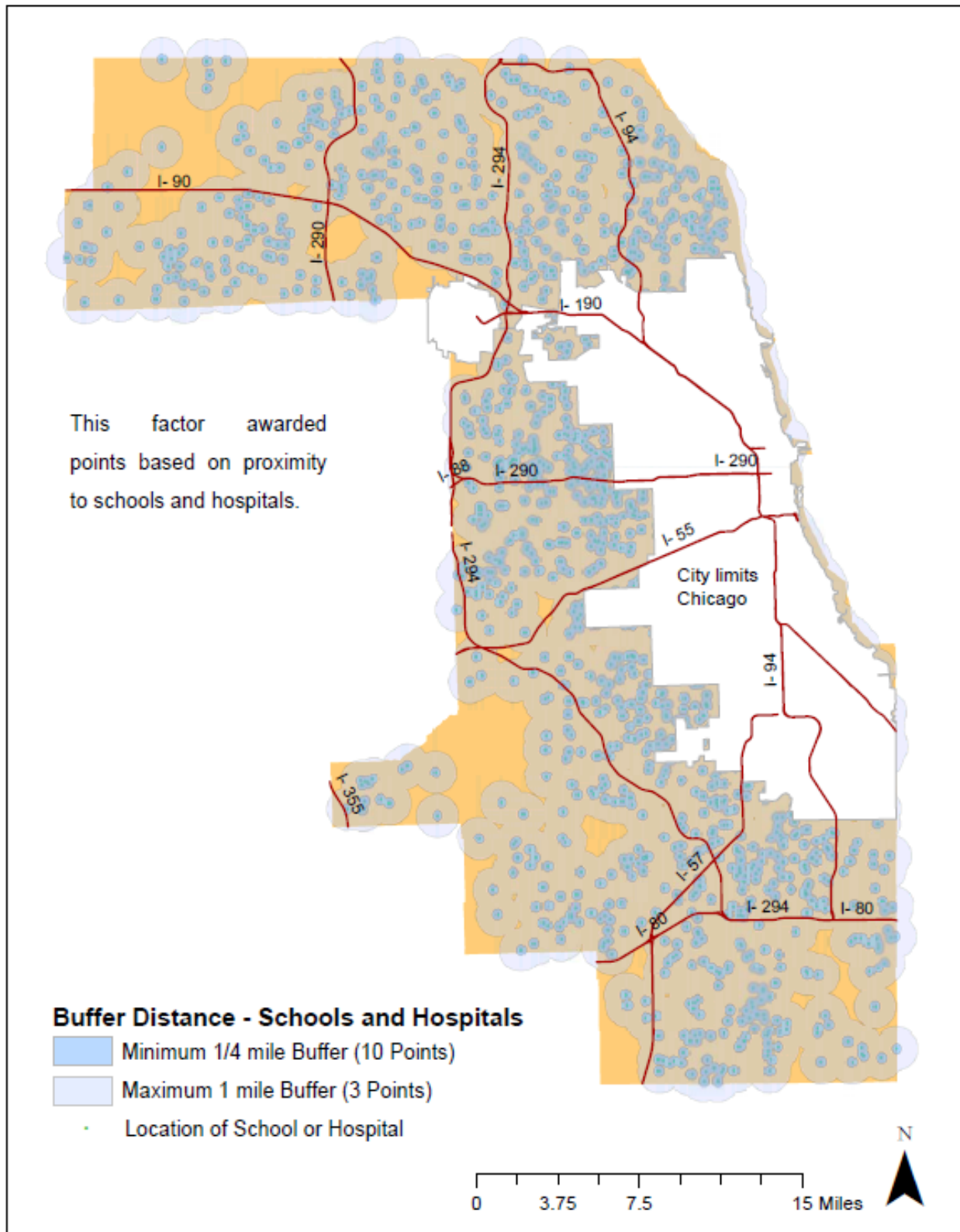
## Cook County, Illinois Disabled Population Density excluding City of Chicago



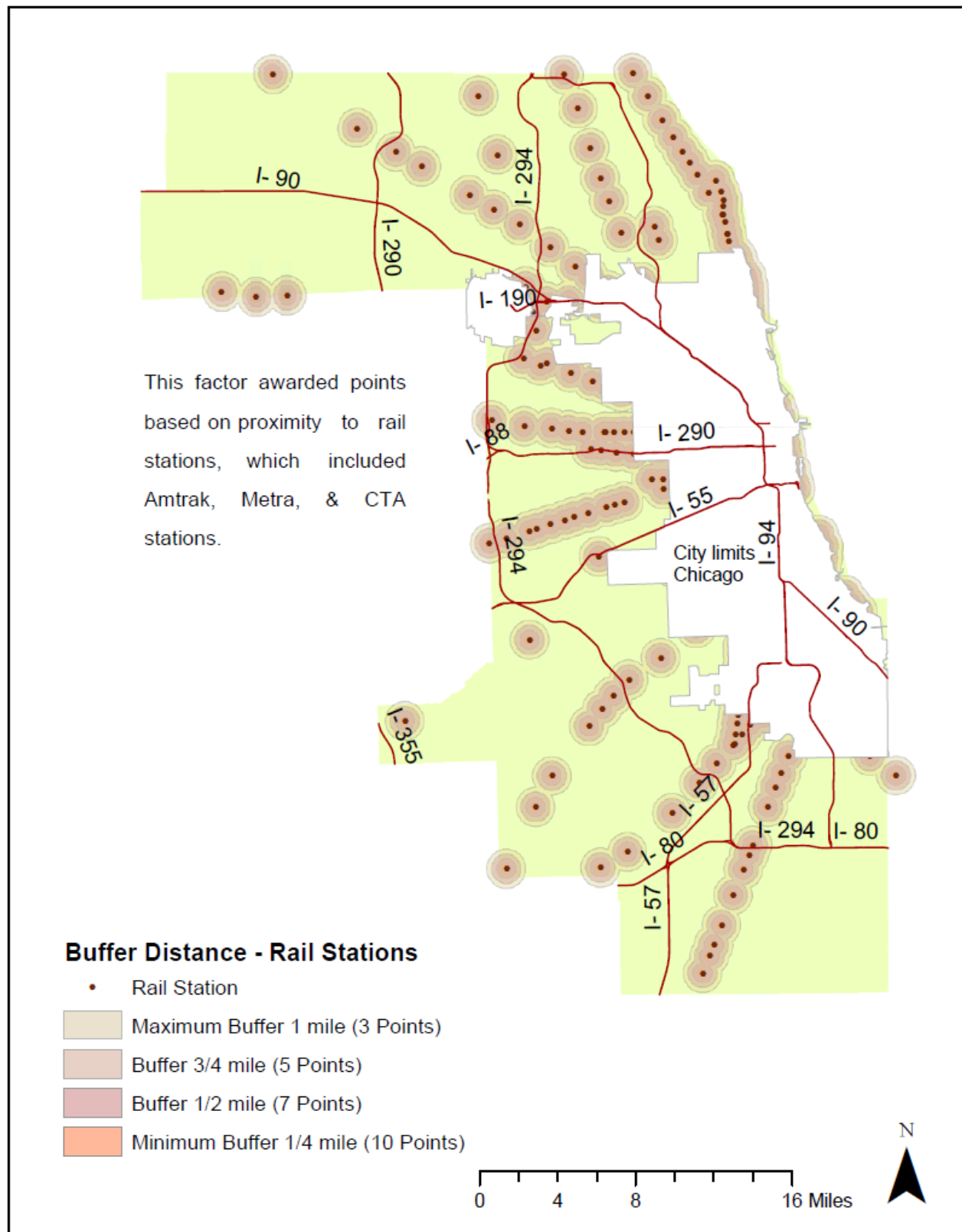


## Cook County, Illinois

### Distance from Schools and Hospitals



## Cook County, Illinois Distance from Rail Stations



# ADA Transition Plan

## Appendix I: Maximum Extent Practicable (MEP)

Honorable Toni Preckwinkle,  
President, Cook County  
Board of Commissioners

Jennifer “Sis” Killen, P.E., PTOE  
Superintendent,  
Department of Transportation  
and Highways

ADA Coordinator  
CCDOTH  
69 W. Washington Street, Suite 2300  
Chicago, IL 60602  
Attn: Mr. Andrew Werner, P.E.  
[ADA.Coordinator@cookcountyil.gov](mailto:ADA.Coordinator@cookcountyil.gov)



**CONNECTING**  
**COOK COUNTY**  
Beyond Transportation

This form (IDOT Form BDE 3101) can also be found at the address below:

<https://idot.illinois.gov/content/dam/soi/en/web/idot/documents/idot-forms/bde/bde-3101.pdf>



Illinois Department  
of Transportation

### ADA Statement of Maximum Extent Practicable

Print Form

E-mail

Reset Form



Route	Street	Marked	Contract #	State Job #
Section	County	Municipality		
Project Limits				
Project Length				
Estimate of Cost	Type of Project (e.g. SMART, 3R, Reconstruction)			
Brief Project Description				

#### DOCUMENTATION OF MAXIMUM EXTENT PRACTICABLE (MEP)

Location(s) where MEP is Requested			
Design Element for which MEP is Requested and Proposed Design Value			
Design Element Policy Value	Coordination Meeting Date	Prepared By	Date
Specify and Explain Reason(s) why Full Compliance is Infeasible			
<input type="checkbox"/> Structural (e.g. bridge beams, buildings, basements, foundations)			
<input type="checkbox"/> Historic Preservation (e.g. historic buildings, districts, monuments)			
<input type="checkbox"/> Topography (e.g. steep existing road grade exceeds ADA compliant maximum)			
<input type="checkbox"/> Utilities (Project scope would not otherwise require utility relocation)			
<input type="checkbox"/> Right-of-Way (Project scope would not otherwise require R.O.W)			
<input type="checkbox"/> Other			
Discuss Alternatives Considered (Attach supporting documentation, e.g. plan and profile sheets, photos)			

#### APPROVAL/DISAPPROVAL

BDE Approval Date	BDE Disapproval Date
BDE Comments on Disapproval	



# ADA Transition Plan

## Appendix J: Heat Map of Location- Based Priority Form

Honorable Toni Preckwinkle,  
President, Cook County  
Board of Commissioners

Jennifer "Sis" Killen, P.E., PTOE  
Superintendent,  
Department of Transportation  
and Highways

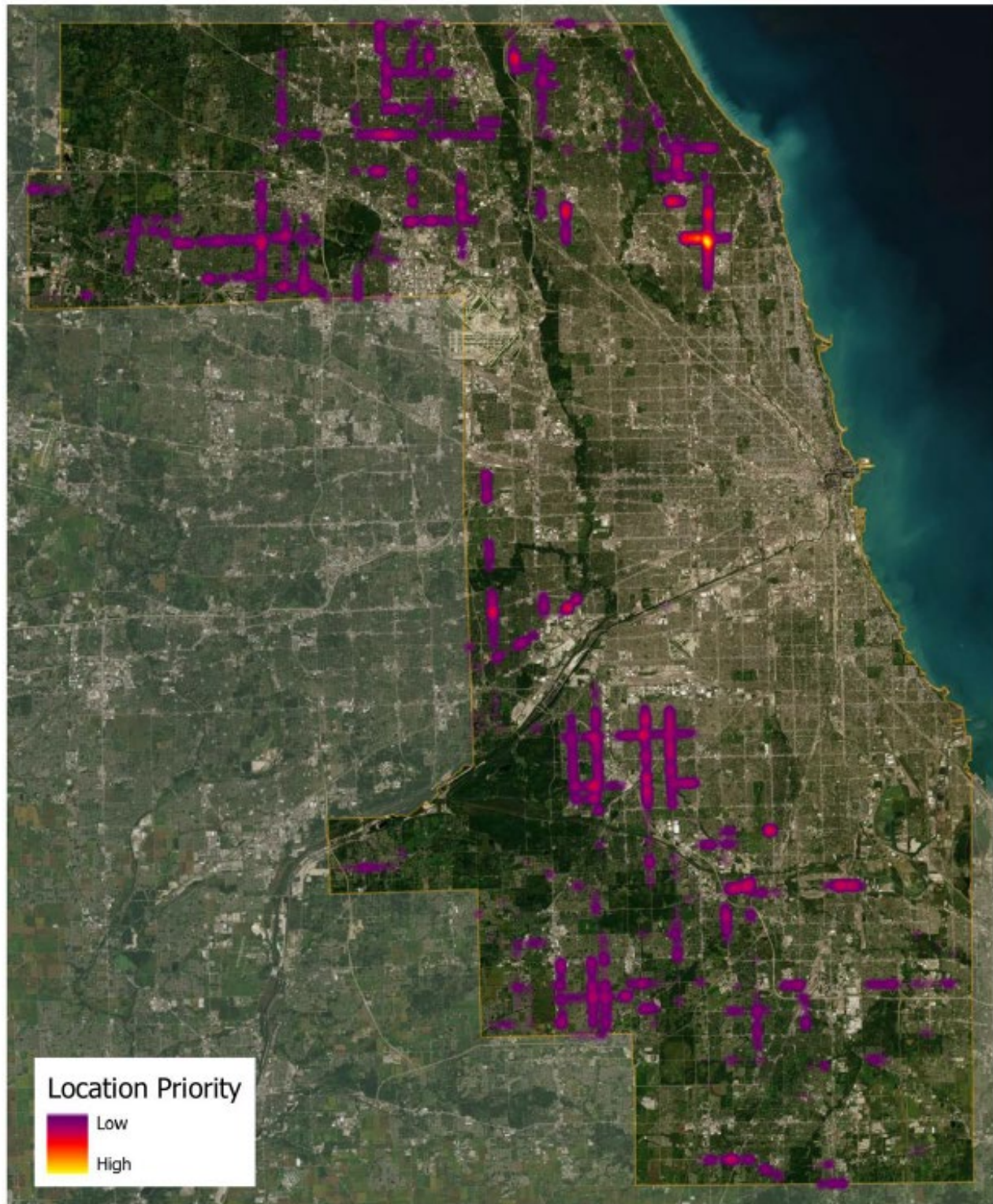
ADA Coordinator  
CCDOTH  
69 W. Washington Street, Suite 2300  
Chicago, IL 60602  
Attn: Mr. Andrew Werner, P.E.  
[ADA.Coordinator@cookcountyil.gov](mailto:ADA.Coordinator@cookcountyil.gov)



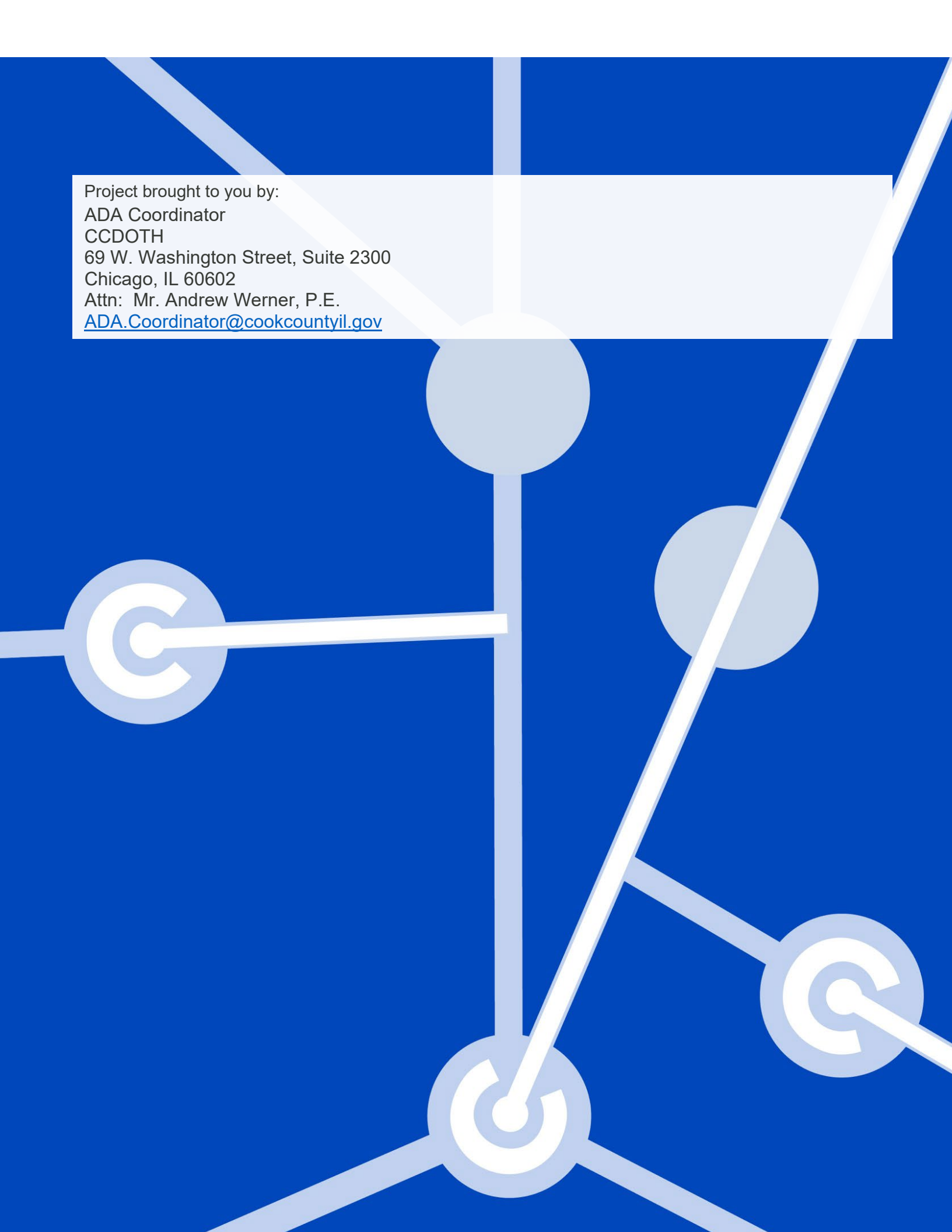
**CONNECTING**  
**COOK COUNTY**  
Beyond Transportation

## Heat Map Location-Based Priority

ADA Inventory / Current Conditions  
Heat Map of Curb Ramp Locations Based on Location Priority



Appendix J: Heat Map of Location-Based Priority

An abstract graphic on a blue background. It features a network of white lines and circles. A central circle at the bottom has three lines radiating from it. To its left, a horizontal line connects to a circle containing a stylized 'C'. To its right, a diagonal line connects to another circle. Further up and to the right, another circle is connected by a diagonal line. A thick white line runs diagonally from the top left towards the center. A light blue rectangular box is positioned in the upper left, containing contact information.

Project brought to you by:

ADA Coordinator

CCDOTH

69 W. Washington Street, Suite 2300

Chicago, IL 60602

Attn: Mr. Andrew Werner, P.E.

[ADA.Coordinator@cookcountyil.gov](mailto:ADA.Coordinator@cookcountyil.gov)